

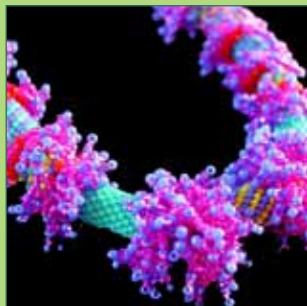


stitchncraft beads

quality beads, sparkling service

WORKSHOP PROGRAMME

January – December 2012



Shop and mail order:
01747 830666



Opening hours
9.30am – 5pm
Monday to Saturday

(Answer phone available
at other times)

The Studio, 2 Chaldicott Barns, Tokes Lane, Semley, Nr Shaftesbury, SP7 9AW

www.stitchncraft.co.uk

www.westofenglandevents.co.uk

Workshop Calendar

JANUARY

In the Studio this month...
Exhibition of work by
Pam Palmer

Monday 9th

Learn to Bead Netting -
Elizabeth Selwood

Thursday 19th

Learn to Knit -
Julia Hall

Saturday 21st

Colour Me Beadiful -
Heather Kingsley-Heath

Thursday 26th

Triangle Weave Rope -
Pam Palmer

Saturday 28th

Art Nouveau Bracelet -
Gary Taylor

FEBRUARY

In the Studio this month...
Exhibition of beadwork by
Jean Power

Friday 10th

Beadalicious -
Sallyann Dunn

Monday 13th

LTB Spiral Ladders -
Elizabeth Selwood

Friday 17th

Elizabethan Bracelet -
Annette Bolton

Saturday 18th

Majestic Jewels -
Lynn Firth

Thursday 23rd

Learn to Crochet -
Julia Hall

Friday 24th

Yazmina -
Jane Marie Griffin

Saturday 25th

Beginners Beaded Crochet -
Gillan Lamb

Wednesday 29th
Key to My Heart -
Jean Power

MARCH

In the Studio this month...
Exhibition of FIMO by
STEADTLER UK

Saturday 3rd

Beginners Chain Maille -
Gary Taylor

Wednesday 7th

Neptune's Jewels -
Elizabeth Selwood

Friday 9th

Enchanter's Tassel -
Heather Kingsley-Heath

Saturday 10th

Demo Day with Fimo
Kerrie Venner for STAEDLER UK

Monday 12th

LTB Flat Peyote -
Elizabeth Selwood

Thursday 15th

Learn to Knit I-Cord -
Julia Hall

Saturday 17th

Victoria Cuff -
Pam Palmer

Monday 19th & Tuesday 20th -
Monarch Butterfly

Huib Petersen

Thursday 22nd

Rain Chain Links -
Huib Petersen

Friday 23rd

Pretty Pansies -
Huib Petersen

Saturday 24th

Fimo First Timers -
Kerrie Venner

Saturday 31st

Candy -
Sallyann Dunn

APRIL

In the Studio this month...
Exhibition of work by
Sabine Lippert

Monday 2nd

LTB Peyote -

Elizabeth Selwood

Saturday 14th

Ecuadorian Summer Necklace -
Gillian Lamb

Thursday 19th

Crystal Cubes -
Annette Bolton

Saturday 21st

Country Garden -
Heather Kingsley-Heath

Wednesday 25th

Pear Drop Bracelet -
Sylvia Fairhurst

Friday 27th

Jaipur Jewels -
Jean Power

Saturday 28th

Takara Bangles -
Sian Nolan

MAY

In the Studio this month...
Exhibition of work by
Sian Nolan

Saturday 5th

Bead Embroidery -
Angela Massey

Thursday 10th

Lavender & Lace -
Elizabeth Selwood

Saturday 12th

Babylon Necklace -
Gary Taylor

Monday 14th

LTB Ring Closure -
Elizabeth Selwood

Thursday 17th

Beadazzled Neckpiece
Annette Bolton

Saturday 19th

Lucia -
Sallyann Dunn

Friday 25th

Sophia Cuff -
Pam Palmer

Saturday 26th
Beaded Ring Day -
Chloe Menage
Thursday 31st
Knitting with Beads -
Julia Hall

JUNE

In the Studio this month...
Exhibition of work by
Melanie de Miguel

Saturday 2nd
Rockpool Rivolis -
Lynn Jones
Friday 8th
Rice Dumplings -
Jane Matthews
Saturday 9th
Purple Pearls -
Jane Matthews
Monday 11th
LTB Dutch Spiral -
Elizabeth Selwood
Tuesday 12th
Georgian Elegance -
Laura McCabe
Wednesday 13th
Deco Bracelet -
Laura McCabe
Friday 15th & Saturday 16th
Masterclass Beaded Sculpture -
Laura McCabe
Monday 18th
Deco Bracelet -
Laura McCabe
Tuesday 19th & Wednesday 20th
Masterclass Beaded Sculpture -
Laura McCabe
Thursday 21st
Georgian Elegance -
Laura McCabe
Saturday 23rd
Fierless Fimo Bead Bonanza -
Kerrie Venner
Saturday 30th
Lorenzo Bracelet -
Melanie de Miguel

JULY

In the Studio this month...
Exhibition of work by
Rachel Reilly

Friday 6th
Summer Jewels Duo -
Elizabeth Selwood
Saturday 7th
Celtic Daisy Chain Maille -
Gary Taylor
Monday 9th
LTB Flat Herringbone
Elizabeth Selwood
Thursday 12th
Calamari Curliness -
Heather Kingsley-Heath
Saturday 14th
Quintuple Lariat -
Pam Palmer
Tuesday 17th
Zanzibar -
Sabine Lippert
Wednesday 18th
Renaissance -
Sabine Lippert
Friday 20th
Fifty Links Necklace -
Sabine Lippert
Saturday 21st
Orchid Bracelet -
Sabine Lippert
Tuesday 24th
Taster Session Celini Spiral -
Lucy Andrews
Thursday 26th
Filigree of Pearls -
Jane Marie Griffin
Friday 27th
Taster Session Rivoli Charms -
Lucy Andrews
Saturday 28th
Imperial Pearls
Lynn Firth
Tuesday 31st
Rivoli Roses -
Jean Power

AUGUST

In the Studio this month...
Exhibition of work from the
Treasure Challenge

Wednesday 1st
Shelley Bracelet -
Carol Kirk
Friday 3rd
Treasure Trove Bracelet -
Carol Kirk
Saturday 4th
Beady Picnic
At the Studio
Wednesday 8th
Taster Session Memory Wire Spiral -
Lucy Andrews
Thursday 9th
Taster Session Bobble Berry Bracelet -
Lucy Andrews
Friday 10th
Flying Ringlets -
Laura Andrews
Saturday 11th
Pave Beads -
Laura Andrews
Monday 13th
LTB Flat Herringbone -
Elizabeth Selwood
Tuesday 14th
Taster Session Double Spiral -
Lucy Andrews
Thursday 16th
Taster Session Pearl Watchband -
Lucy Andrews
Friday 17th
Taster Session Orgalala Butterfly -
Lucy Andrews
Saturday 18th
Freya -
Sallyann Dunn
Wednesday 22nd
Taster Session Caterpillar Bracelet -
Lucy Andrews
Thursday 23rd
Taster Session Dizzy Donuts -
Lucy Andrews

Saturday 25th

Chocolate Dipped Strawberries -

Katie Dean

Wednesday 29th

Taster Session Delicate Daisies -

Lucy Andrews

Thursday 30th

Taster Session Russian Spiral -

Lucy Andrews

Friday 31st August

Berry Bead Bracelet -

Lucy Andrews

SEPTEMBER

In the Studio this month...

Exhibition of work from

Керrie Slade

Saturday 1st

Catherine Necklace -

Pam Palmer

Tuesday 4th

Lavinia Bracelet -

Maggie Meister

Wednesday 5th

Iside Pendant -

Maggie Meister

Friday 7th

Lavinia Bracelet -

Maggie Meister

Saturday 8th

La Lanterna Earrings or Pendant -

Maggie Meister

Monday 10th

LTB Square Stitch -

Elizabeth Selwood

Wednesday 12th

Embeadery -

Heather Kingsley-Heath

Saturday 15th

Cleopatra Spirals Bracelet -

Gary Taylor

Thursday 20th

Learn to Crochet Curly Wurly -

Julia Hall

Friday 21st

Annabel Necklace -

Annette Bolton

Saturday 22nd September

Angles for Dangles -

Lynn Firth

Saturday 29th

Tangerine Dream -

Sian Nolan

OCTOBER

In the Studio this month...

Exhibition of work by

Jennifer Aird

Monday 1st

LTB Brick Stitch -

Elizabeth Selwood

Tuesday 2nd & Wednesday 3rd

Masterclass Nefertiti's Treasure -

Melanie de Miguel

Saturday 6th

Chrissy Bracelet -

Sallyann Dunn

Wednesday 10th

Shades of Victoriana -

Elizabeth Selwood

Saturday 13th

Half Persian Chain Maille -

Gary Taylor

Monday 15th

LTB Right Angle Weave -

Elizabeth Selwood

Thursday 18th

Freeform Designer Bag -

Julia Hall

Saturday 20th

Huckleberry Buckle -

Heather Kingsley-Heath

Thursday 25th

Russian Swirls

Pam Palmer

Saturday 27th

Fearless Fimo Focals & Cabochons -

Kerrie Venner

Wednesday 31st & Thursday 1st

Crystal Stars Necklace -

Jean Power

NOVEMBER

In the Studio this month...

Exhibition of work by

Moira Brown

Saturday 3rd

More Beaded Crochet -

Gillian Lamb

Wednesday 7th

Beaded Baubles -

Lynn Firth

Saturday 10th

Lacey Elements -

Sylvia Fairhurst

Thursday 15th

Learn to Knit Cable Stitch -

Julia Hall

Saturday 17th

Beaded Baubles -

Lynn Firth

Thursday 22nd

Beaded Angel -

Elizabeth Selwood

Saturday 24th

Chain Maille Nouveau Watch -

Gary Taylor

Wednesday 28th

Cleopatra Bracelet -

Annette Bolton

Friday 30th

Ice Queen -

Elizabeth Selwood

DECEMBER

In the Studio this month...

Exhibition of work by

The Thursday Beaders

Saturday 1st

Pink Passion -

Pam Palmer

Saturday 8th

Encapsulated Beads -

Gary Taylor

Monday 10th

LTB St Petersburgh Chain

Elizabeth Selwood

2012 Programme

Workshops will go on sale from 10am Wednesday 12th October.

We are very proud of our 2012 Workshop Programme with over 120 classes scheduled throughout the year and 27 tutors. At the Studio we believe in providing our students with a comfortable and relaxed experience. Our tutors offer a vast array of different techniques and abilities and we are pleased this year to welcome some new faces to our venue.

A big welcome to our USA tutors for this year, Laura McCabe, who many of you have met at the Studio before, and new to us, Laura Andrews, Maggie Meister and Huib Petersen. All of these tutors are regular faces at the Bead&Button Show in America. This is your chance to experience a 'Bead&Button' tutor, in the UK.

We would also like to introduce to you some wonderful new British designers, Katie Dean, Lynn Jones, Carol Kirk, Angela Massey, Sian Nolan, Chloe Menage and Kerrie Venner, all experienced tutors but new to us at the Studio.

We feel confident that there is something for everyone, from beginners to the more advanced and 'Taster Sessions' for those that want to have a little dabble (these are shown with yellow coloured banners in the programme).

Workshop Booking Information

Workshop Fees

All full day adult classes run from 10.00am – 4.00pm (unless otherwise stated) and cost £30.00 per person excluding materials (unless otherwise stated). Tea and coffee will be provided and you are welcome to bring a packed lunch

Cancellation

We reserve the right to cancel a workshop up to two weeks prior to the event if there are insufficient numbers. Should the workshop have to be cancelled we will refund your fee in full. We regret that refunds cannot be given in any other circumstances and course fees or deposits are not transferable.

Bookings

You may reserve your place by telephone, e-mail, fax, or in person and a 50% deposit will secure your booking. The balance of the fee will be required 4 weeks prior to the workshop when a requirements list will be sent to you. Payment of the balance will be taken automatically on the credit card you used to pay your deposit or we will call you for card details should this have expired.

We reserve the right to cancel a booking, without the deposit being refunded, should the final amount not be paid for any reason.

To book a place telephone 01747 830666 or online at www.stitchncraft.co.uk

Studio Groups

We have several groups that meet at the Studio on a regular basis, enjoy a cup of coffee or tea with biscuits and bead or knit for a couple of hours whilst catching up with projects or working on new ideas together.

The groups are detailed below with scheduled meeting dates opposite . If you are interested in joining one of the groups, the contact details with email address are shown. Please, do not turn up for a group meeting without talking to the organiser first as we can only sit twelve people comfortably at any one time.

Batty Beaders

The Batties meet normally on the last Monday of each month. They are a 'self help' beading group who enjoy each others company whilst they sit and bead. They are regular exhibitors at the West of England Bead Fair and have been going now for over ten years. If you are interested in finding out more about this group please email Mary Gray at philip.gray@btinternet.com

Knitting Club

Knitty group is organised by Julia Hall and meet at the Studio alternate Tuesdays. They get together to help each other with projects whilst enjoying each others company. If you would like to find out more about this group please email Julia Hall at juliahall981@btinternet.com

U3A

The U3A Beading Group (University of the Third Age) meet on the third Wednesday of the month at the Studio and is run by Elizabeth Selwood. Elizabeth teaches the group beady projects each month. If you are interested in finding out more about this group please email Elizabeth at tande.selwood@googlemail.com

Knit and Natter

Knit and Natter is a new group designed for anyone who loves knitting. They meet at the Studio on the first Thursday of each month where Julia Hall is on hand for expert advice should you require it. If you would like to join the Knit & Natter group please telephone the Studio or email Lynn Firth at knitandnatter@stitchncraft.co.uk

Month	Batty Beaders 10am - 12.30pm	Knitting Club 2.00pm - 4.30pm	Knit and Natter 10am - 12.30pm	U3A 10am - 12.30pm
January	30th	3rd, 17th, 31st	5th	18th
February	27th	14th, 28th	2nd	15th
March	26th	13th, 27th	1st	21st
April	30th	10th, 24th	5th	18th
May	28th	8th, 22nd	3rd	16th
June	25th	26th	7th	27th
July	30th	3rd	5th	25th
August	20th	7th, 21st	2nd	15th
September	24th	11th, 25th	6th	19th
October	29th	9th, 23rd	4th	17th
November	26th	6th, 20th	8th	21st
December	3rd	4th	6th	19th

Accommodation

If you are visiting our Studio and would like to stay in local Bead & Breakfast accommodation, here are a few details you may find useful. Please mention Stitchncraft Beads when making your enquiry or booking.

Holbrook Bed & Breakfast

www.holbrookbandb.co.uk Telephone 01747 858522

Mereworth Bed & Breakfast

www.mereworthhouse.co.uk Telephone 01747 828640

The Chalet

www.thechalet.biz Telephone 01747 853945

The Retreat

www.the-retreat.co.uk Telephone 01747 850372

Whitebridge Farm Holiday Cottages

www.whitebridgeholidaycottages.co.uk Telephone 01747 830462

Shaftesbury Tourist Information - has a list of additional accommodation in the area.

www.shaftesburydorset.com - Telephone 01747 853514

To book a place telephone 01747 830666 or online at www.stitchncraft.co.uk

January 2012

In the Studio for January...

Pam Palmer will be exhibiting examples of her varied types of beadwork, some jewellery, sculptural and fun items. Included in the display are the pieces that Pam will be teaching at the Studio during the year. Come along this month to see work inspired by nature's palette of colours and shapes and gain inspiration yourself or perhaps, book some workshops to attend.



Monday 9th January

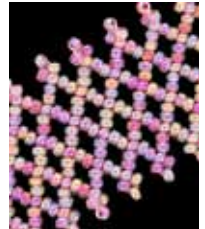
10am - 12.30pm

Learn to Bead Netting - Elizabeth Selwood

£15.00

If you have always wanted to have a go at Bead Needleweaving and don't know the difference between Peyote and Right Angle Weave or you just want to brush up on a technique, then this is the course for you. Discover Bead Netting and make a delicate bracelet or necklace.

Suitable for complete beginners.



Thursday 19th January

Learn to Knit - Julia Hall

Have you always wanted to learn to knit but don't know where to start, what yarn to use, how to cast on and off and read a pattern? This is your chance to get in on the knitting craze and with so many wonderful patterns and yarns available there has never been so much choice. Julia will guide you through the basics in this full day class.

Suitable for complete beginners.



Saturday 21st January

Colour Me Beadiful - Heather Kingsley-Heath

This workshop will take the terror out of choosing colours for your beadwork. Heather's simple techniques and gentle approach make this a must for everyone curious about colour. Learn how to make your own pretty mood boards, how to try out the beads with a quick and easy sampler. Plus, you can stitch your samplers together for a great new design for a bracelet or necklace.

Suitable for beginners, intermediate and advanced beaders.



Thursday 26th January

Triangle Weave Rope - Pam Palmer

A beautifully draping rope made with fire polished beads in Triangle Weave for a touch of sophistication. The use of colour highlights the texture of the basic rope. For those whose tastes are more flamboyant, the rope forms a good base for embellishment. The tubular form of the stitch will be fully covered during the workshop.

Suitable for intermediate and advanced beaders.



Saturday 28th January

Art Nouveau Bracelet - Gary Taylor

A touch of Art Nouveau with this beautiful delicate design made with wire working wrapping and weaving. The SWAROVSKI ELEMENTS crystals add an extra sparkle to this beautiful design. Ideal for bracelets, earrings, hair slides and more.

Suitable for all levels including beginners.



February 2012

In the Studio for February...

Jean Power is a multi award-winning jewellery designer who lives and works in London. Her work has been published in books and magazines around the world and as well as being the author of three beading books, she previously edited a beading magazine for four years. She loves working with shape and colour and experimenting to see what variations can be created from the same idea.



Friday 10th February

Beadilicious - Sallyann Dunn

These beaded beads are made using various Right Angle Weave techniques and uses seed beads in sizes 15, 11, 8 and 6. Add a few SWAROVSKI ELEMENTS to give the bead some sparkle. Working knowledge of Right Angle Weave essential.

Suitable for intermediate and advanced beaders.



Monday 13th February

10.00am - 12.30pm

Learn to Bead Spiral Ladders - Elizabeth Selwood £15.00

If you have always wanted to have a go at Bead Needleweaving and don't know the difference between Peyote and Right Angle Weave or you just want to brush up on a technique, then this is the course for you. Discover Spiral Ladders and watch them grow into beautiful bracelets, necklaces and more.



Suitable for all levels including complete beginners.

Friday 17th February

Elizabethan Bracelet - Annette Bolton

This pretty design is a completely reversible bracelet inspired by Elizabethan jewellery. An easy pattern to get to grips with Right Angle Weave (RAW) using SWAROVSKI ELEMENTS. Get two fantastic sparkly bracelets for the price of one.

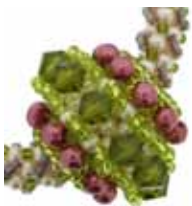


Suitable for intermediate and advanced beaders.

Saturday 18th February

Majestic Jewels - Lynn Firth

These firm layered beaded beads are made with SWAROVSKI ELEMENTS crystals, pearls and seed beads and are made using Right Angle Weave, Peyote and Netting Techniques. They are then put onto a tubular Right Angle Weave rope which is embellished with crystals and Delica beads. Students must be familiar with Right Angle Weave.



Suitable for intermediate and advanced beaders.

Thursday 23rd February

Learn to Crochet - Julia Hall

Have you always wanted to have a go at crochet but don't know a chain from a treble, how to crochet flat or in the round? Let Julia show you how and you will soon be on your way crocheting curly scarves or perhaps decorative edges to your knitted projects. This workshop will open up a new creative avenue for you!



No experience necessary, suitable for complete beginners.

Friday 24th February

Yazmina - Jane Marie Griffin

Yazmina is a delightful little beaded element using circular Brick Stitch. It is double sided with a delicate texture and can be used to create a variety of items such as a bracelet, necklace, earrings and even three dimensional items. The possibilities are endless, come along and have a relaxing day experimenting with the design possibilities.

Suitable for intermediate and advanced beaders.



Saturday 25th February

Beginners Beaded Crochet - Gillian Lamb

Have you always wanted to have a go at Beaded Crochet but just found it too hard or don't know where to start? Come along to Gillian's workshop and we guarantee you will be crocheting beaded bracelets and ropes in no time at all! No knowledge of crochet required.

Suitable for beginners, intermediate and advanced.



Wednesday 29th February

Key to My Heart - Jean Power

Learn how to create these beaded accurate looking, or crystallised keys and complete the theme with a matching lock. Turn them into pendants or a complete themed necklace.

Suitable for advanced beaders.



March 2012

In the Studio for March...

STAEDTLER is showcasing its versatile and creative range of jewellery products and accessories in this FIMO exhibition. On display are exquisite creations by acclaimed jewellery designers including The Crafts Channel's Corinne Bradd, Carol Blackburn, Lindly Huanani, Donna Kato, Bonnie Mc Gough, Charlotte Stowell, Kerrie Venner, Rachel Warren and Elise Winters. Come along and see what can be done with FIMO!



To book a place telephone 01747 830666 or online at www.stitchncraft.co.uk

Saturday 3rd March

Beginners Chain Maille - Gary Taylor

Let Gary show you how you can make stunning chains, necklaces and bracelets with just jump rings and pliers. No experience of Chain Maille required. There will be a small charge payable to Gary on the day for the jump rings used in class which should not exceed £5.00.

Suitable for complete beginners.



Wednesday 7th March

Neptune's Jewels - Elizabeth Selwood

In this stylish and flattering necklace, St Petersburg chain techniques have been combined and extended to include your choice of pretty beads, a drop and a rivoli formed into a deep v shape.

Suitable for intermediate and advanced beaders.



Friday 9th March

Enchanter's Tassel - Heather Kingsley-Heath

The next episode in Heather's delicious series of 'Treasure' designs. Create an embellished tassel top, lots of lavish fringing, then add some interlinking elements and a delicately stranded necklace. Whether you want a tummy tickling lariat length of loveliness, or a sweet shorter necklace, this design has several variations to explore.

Suitable for intermediate and advanced beaders.



Saturday 10th March

Demonstration and Have a Go with FIMO

No Charge

STAEDTLER is showcasing its versatile and creative range of jewellery products and accessories. Kerrie Venner will be on hand to talk to you about her forthcoming workshops at the Studio and to demonstrate just how easy and adaptable FIMO is and how you can add another dimension to your jewellery making and beadwork. Have a go sessions will be running throughout the day.



Monday 12th March

10.30am - 12.30pm

Learn to Bead Flat Peyote - Elizabeth Selwood £15.00

If you have always wanted to have a go at Bead Needleweaving and don't know the difference between Peyote and Right Angle Weave or you just want to brush up on a technique, then this is the course for you. Discover Peyote Stitch and learn how to use this versatile stitch to make bracelets, necklaces and more.

No experience necessary.



Thursday 15th March

10.00am - 12.30pm

Learn to Knit I-Cord - Julia Hall £15.00

Learn how to knit an I-Cord in this half day workshop. An I-Cord is a continuous piece of knitting that forms a tube and can be used to make wearable jewellery such as a lariat, necklace or bracelet and can also be stuffed with a rope or cord to form handles or coiled mats. A very versatile technique to add to your knitting skills. Students will need to have basic skills in knitting.

Suitable for all levels of knitters.



Saturday 17th March

Victoria Cuff - Pam Palmer

Miyuki Tila beads are used to create the beaded circles in this interesting bracelet. They form the centre pieces of the design that is then embellished to produce a cushion of pearls for them to sit in. A basic working knowledge of Right Angle Weave is needed.

Not suitable for complete beginners.



Tuesday 20th & Wednesday 21st March

Monarch Butterfly - Huib Petersen £120.00

The body of this wonder of nature is stitched in tubular Peyote stitch with increasing and decreasing which gives it its shape. The wings are stitched on the diagonal in Russian Leaf stitch which gives your work the feel of fabric cut on the bias. A great stitch to know and usable in many projects as the petals of flowers, the wings of insects or birds or as a pretty V shaped classic necklace.

Suitable for intermediate and advanced beaders.

To book a place telephone 01747 830666 or online at www.stitchncraft.co.uk



Thursday 22nd March

Rain Chain Links - Huib Petersen

£60.00

This project was inspired by the Japanese Rain Chain and in this project you will learn how to combine tubular Right Angle Weave and triangle weave to create shapes that look as though they are grabbing each other. This class will bring you another step further in shaping your beadwork into three dimensional and hopefully inspire you to create your own Rain Chain Links.



Suitable for intermediate and advanced beaders.

Friday 23rd March

Pretty Pansies - Huib Petersen

£60.00

The petals of this pretty flower is beaded in flat Peyote and the way the stitch is finished off creates the shape which is then zipped together to form the heart of the flower which gives it its depth. The leaves are stitched on the diagonal with a variation of Russian Leaf Stitch. Working knowledge of Peyote stitch required.



Suitable for intermediate and advanced beaders.

Saturday 24th March

Fimo First Timers - Kerrie Venner

Do you want to try Fimo polymer clay to see if it is your kind of medium and gain some confidence before purchasing equipment? Then this workshop is for you! You'll take home at least two pendants finished and ready to wear. During the class you'll learn how to prepare the clay, how to shape it, texture it, add different craft mediums to create 'wow' effects.



Suitable for complete beginners.

Saturday 31st March

Candy - Sallyann Dunn

This feminine bracelet is beaded using Right Angle Weave and SWAROVSKI ELEMENTS pearls. Sparkly crystals can be added if you wish. Students should have a working knowledge of Right Angle Weave.



Suitable for beginners, intermediate and advanced beaders.

April 2012

In the Studio for April...

Sabine Lippert is a self taught bead artist, who loves to create spherical pieces with a symmetric structure one day and the next day she changes to the opposite side and starts beading freestyle projects, just depending on the mood! Materials are sometimes combined in more unusual ways - like Raku cabochons and SWAROVSKI ELEMENTS. In May 2012 she will be publishing her first English book as part of the Masterclass Beading series of Lark Books.



Monday 2nd April

10am - 12.30pm

Learn to Bead Tubular Peyote - Elizabeth Selwood £15.00

Tubular Peyote is a great technique to learn and you can create stunning necklaces and bangles just by changing the size and shape of your beads. Learn all about 'step up' and the 'Peyote click' in this informative session.

No experience necessary.



Saturday 14th April

Ecuadorian Summer Necklace - Gillian Lamb

Simple but very effective patterns to make elegant necklaces using daisy chain and a netting technique from Ecuador. Gillian will also give you tips on how to turn the necklace into a matching bracelet, just perfect for your summer outfits.

Suitable for all levels including beginners.



Thursday 19th April

Crystal Cubes - Annette Bolton

Little crystal cubes make an attractive and sparkly bracelet, with the addition of Swarovski pearls. Explore some of the interesting variations possible, while learning how to use two needles.

Suitable for all levels including beginners.



To book a place telephone 01747 830666 or online at www.stitchncraft.co.uk

Saturday 21st April

Country Garden - Heather Kingsley-Heath

Make a gorgeous floral corsage or neck piece with Heather's new beaded flower and leaves design. Inspired by vintage prints and the prettiest gardens these gorgeous flowers are a mix of Albion and other stitches. This design takes a little time to create but is well worth it. The workshop includes a discussion on colour inspiration and how to put colours together to capture the perfect vintage moment.

Suitable for intermediate and advanced beaders.



Wednesday 25th April

Pear Drop Bracelet - Sylvia Fairhurst

Using a combination of shapes, sizes and colours, create this flexible three dimensional bracelet, that is comfortable to wear using bead netting. The bracelet also features a customised fastener to complement the bracelet design. Some experience of tubular work is desirable.

Suitable for beginners, intermediate and advanced beaders.

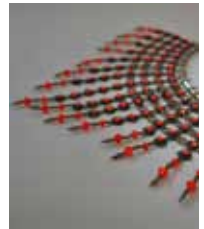


Friday 27th April

Jaipur Jewels - Jean Power

Combine continually beaded seed bead motifs with SWAROVSKI ELEMENTS to create a dramatic necklace. Jean will also show you how you can create matching pieces, and even reversible items, to complete the look.

Suitable for intermediate and advanced beaders.



Saturday 28th April

Takara Bangles - Sian Nolan

'Takara' means 'Treasure' in Japanese. Using Right Angle Weave create this ultra-wearable bangle. Using lustrous SWAROVSKI ELEMENT pearls, sparkly Swarovski Crystal Bicones and Swarovski Roses Montees for that added twinkle! We will then explore the design further, making smaller versions, 'Bangleini's' which can be used in a variety of ways.

Suitable for beginners, intermediate and advanced beaders.



May 2012

In the Studio for May...

Sian Nolan said she was thrilled to be asked to put on an exhibition of her beadwork at the Studio. She said "It's not often I get the opportunity to show it all off"! From miniature beaded dresses and bags to 3D animals and curiosities, Sian has many beautiful designs, some by renowned artists as well as her own projects. She hopes there will be something appealing and inspiring to all but most of all hopes that her love of beads and beadwork shines through!



Saturday 5th May

Bead Embroidery - Angela Massey

Learn how to bead embroider this pretty and stylish pendant. Combining basic bead embroidery stitches with beads, embellishments and Ultrasuede for the backing, you should be able to finish your pendant on the day and start wearing it that evening! There is a kit fee payable to the tutor on the day of £15.00.

Suitable for beginners, intermediate and advanced.



Thursday 10th May

Lavender and Lace - Elizabeth Selwood

Use a simple and very striking technique for Right Angle Weave to create an unusual V shaped necklace which has been designed to drape perfectly. Embellish with Swarovski crystals for a dramatic result which is very easy to wear.

Not suitable for intermediate and advanced beaders.



Saturday 12th May

Babylon Necklace - Gary Taylor

A beautiful oval SWAROVSKI ELEMENTS which is delicately wrapped and scrolled with wire work and then complemented with a Byzantine chain, making this the best of both worlds - Chain Maille and wire wrapping all in one workshop and with beautiful results! Students must have some experience of Chain Maille.

Suitable for intermediate students.



To book a place telephone 01747 830666 or online at www.stitchncraft.co.uk

Monday 14th May

10.00am - 12.30pm

Learn to Bead Ring Closure - Elizabeth Selwood £15.00

Learn how to bead a Ring Closure to complement your beadwork. These simple fasteners will not look out of place on your beaded necklaces and bracelets and offer more versatility than a manufactured clasp.

No experience necessary.

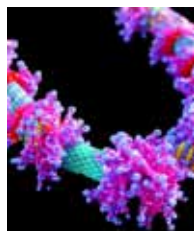


Thursday 17th May

Beadazzled Neckpiece - Annette Bolton

Using a wonderful colour pallet of Miyuki Delica beads create a stunning neckpiece of lush fringing and embellished beaded beads. These can be strung together in a variety of exciting and interesting ways. This is an ideal workshop for those just starting out in Peyote Stitch.

Suitable for all levels including beginners.



Saturday 19th May

Lucia - Sallyann Dunn

The pendant is made with SWAROVSKI ELEMENTS which is bezelled with size 11 and size 15 seed beads then add a beaded rope made with Swarovski Bicones and Pearls to complete this elegant feminine necklace.

Suitable for intermediate beaders.



Friday 25th May

Sophia Cuff - Pam Palmer

This bracelet uses a fair number of SWAROVSKI ELEMENTS but it produces a stunning design. Beaded using circular Triangle Weave. You do not need any previous experience of the stitch but this design is suited to the more advanced beader.

Suitable for advanced beaders.



Saturday 26th May

Beaded Ring Day - Chloe Menage

Learn how to create these two lovely SWAROVSKI ELEMENTS rings using a variety of beads and techniques including Right Angle Weave and Peyote. The perfect projects for someone new to bezelling. These components are addictive - once you've got the technique why not make more to create a matching bracelet!

Suitable for beginners.



Thursday 31st May

Knitting with Beads - Julia Hall

Learn how to knit with beads whilst making a sparkly glasses case or mobile phone jacket. Once mastered you can add beads to all your knitted projects. Come along to this workshop and let Julia show you how you can create stunning pieces with SWAROVSKI ELEMENTS and beads, you just need basic knitting knowledge of how to cast on and off.

Suitable for students with some knitting experience.



June 2012

In the Studio for June...

Melanie de Miguel's background is in teaching science and love of crafts led her into the world of beadwork design upon joining The Beadworkers Guild. It was like creating beautiful, organic matter with little glass atoms! Her beadwork constantly evolves, led mostly by the beads themselves, into more fascinating dimensions. Mel is currently exploring exciting structural beadwork and components, taking inspiration from fabulous historic periods.



Saturday 2nd June

Rockpool Rivolis - Lynn Jones

Rockpool Rivolis is a fun design for intermediate beaders that are familiar with RAW. Dependant on colour way it would work equally well with jeans or that "little black dress". An optional beaded toggle will be included in the instructions.

Suitable for intermediate beaders.



Friday 8th June

Rice Dumplings - Jane Matthews

Rice Dumplings, beautiful hangings created by wrapping a three dimensional card shape with silky ribbon. Embellished with SWAROVSKI ELEMENTS and beads they are gorgeous on their own, but link several sizes of Dumplings and you have a stunning decoration.

Suitable for all abilities.



Saturday 9th June

Purple Pearls - Jane Matthews

Purple, gold, bronze or rainbow colour SWAROVSKI ELEMENT pearls in various sizes are combined with seed beads in size 6 and 8. This necklace is a clever twist on the traditional Spiral Rope. This stunning design is fabulous to wear and complements fashion for all occasions.

Suitable for all abilities including beginner.



Monday 11th June

10.00am - 12.30pm

Learn to Bead Dutch Spiral - Elizabeth Selwood £15.00

Learn how mixing different sizes of beads together you can create textural and interesting spirals that make stunning necklaces. Discover Dutch Spiral and learn how to use this versatile stitch to make interesting bracelets, necklaces and more.

Suitable for complete beginners.



Tuesday 12th June

Georgian Elegance - Laura McCabe £60.00

The unique combination of woven beadwork and chain creates a delicate and refined look. An innovative bezeling technique unlike any Laura has taught before, creates an elegant setting for the Cubic Zirconia stones which are further embellished with faceted stones, fresh water pearls, and tiny beaded petals. Knowledge of Right Angle Weave and Peyote Stitch required.

Suitable for advanced beadworkers.



Wednesday 13th June

Deco Bracelet - Laura McCabe

£60.00

Inspired by the geometric designs and bold colours of the Art Deco era, this brand new bracelet design utilizes Right Angle Weave and Peyote stitch to create a stunning cuff with fresh water pearls nestled amongst the woven bead work.

Suitable for intermediate to advanced.



Friday 15th & Saturday 16th June

Masterclass Beaded Sculpture - Laura McCabe

£120.00

This two day intensive master class will focus on the technical and conceptual elements of beaded sculpture. Students will be working their own original design with guidance, inspiration and technical support from the instructor. For advanced beaders proficient in all the basic stitching techniques and ready to explore the more art-and-design end of beadwork.

Suitable for advanced beaders.



Monday 18th June

Deco Bracelet - Laura McCabe

£60.00

Inspired by the geometric designs and bold colours of the Art Deco era, this brand new bracelet design utilizes Right Angle Weave and Peyote stitch to create a stunning cuff with fresh water pearls nestled amongst the woven bead work.

Suitable for intermediate to advanced.



Tuesday 19th & Wednesday 20th June

Masterclass Beaded Sculpture - Laura McCabe

£120.00

This two day intensive master class will focus on the technical and conceptual elements of beaded sculpture. Students will be working their own original design with guidance, inspiration and technical support from the instructor. For advanced beaders proficient in all the basic stitching techniques and ready to explore the more art-and-design end of beadwork.

Suitable for advanced beaders.



Thursday 21st June

Georgian Elegance - Laura McCabe

£60.00

The unique combination of woven beadwork and chain creates a delicate and refined look. An innovative bezeling technique unlike any Laura has taught before, creates an elegant setting for the Cubic Zirconia stones which are further embellished with faceted stones, fresh water pearls, and tiny beaded petals. Knowledge of Right Angle Weave and Peyote Stitch required.

Suitable for advanced beaders.



Saturday 23rd June

Fearless Fimo Bead Bonanza - Kerrie Venner

Nervous about opening that first packet of Fimo? This introductory level workshop gets you off to a confident start. We will custom blend colours, create simple canes and make beautiful, well crafted beads. Sanding, buffing and polishing methods will be covered and I'll share all my tips and tricks.

Suitable for complete beginners.



Saturday 30th June

Lorenzo Bracelet - Melanie de Miguel

Inspired by the grand and powerful dynasty of the Medicis, this bracelet combines beautiful large crystals with delicate filigree settings and elegant Fleur de Lys-type connecting components. It is by no means a masculine bracelet but could have been worn by the rich Florentines as an indicator of wealth and style.

Suitable for intermediate and advanced beaders.



July 2012

In the Studio for July...

Inspired by some fine feathers found locally, Rachel Reilly has developed the Deco collection. The contrast of black, cream and golds is a classic and her wire knitted forms blend effortlessly. From small earrings to bold head ornaments, there is something for every taste and need. Working to commission is a speciality.



Friday 6th July

Summer Jewels Duo - Elizabeth Selwood

Discover how to make two very different styles of necklace in one day. Spend the morning on the first pattern, which combines different sizes and colours of seed beads in a much extended version of daisy chain to produce an informal summery necklace. In the afternoon work on the second pattern which uses seed beads, daggers and 4mm beads to produce a beautiful necklace that is really easy to wear.

Suitable for all levels of ability including beginners.



Saturday 7th July

Celtic Daisy Chain Maille - Gary Taylor

This delicate design combines two very different techniques. Pretty Celtic flowers set with crystals linked with Byzantine Chain Maille making this pretty design ideal for necklace bracelets and earrings.

Suitable for intermediate level.



Monday 9th July

10.00am - 12.30pm

Learn to Bead Tubular Herringbone - Elizabeth Selwood £15.00

Tubular Herringbone is such a useful stitch. It is great for necklaces, bracelets and straps and many different variations can be achieved simply by changing the step up, the size of the beads or the quantity of the beads used in each stack. A very useful stitch to add to your repertoire!

Suitable for complete beginners.



Thursday 12th July

Calamari Curliness - Heather Kingsley-Heath

Make a colourful roll on bangle of interlinking coils or create a wiggly centre piece for a spirally pendant. Herringbone stitch is the starting point for some intriguing variations for you to explore. Learn how to vary your coils, make invisible joins and create your own delicious Calamari creation. Students need to be comfortable with good thread tension for this class.

Suitable for intermediate and advanced beaders.



To book a place telephone 01747 830666 or online at www.stitchncraft.co.uk

Saturday 14th July

Quintuple Lariat - Pam Palmer

The beaded beads of the lariat are made using quintuple (five times) variation of Spiral Staircase and joined together using standard Spiral Staircase to give this lariat an intriguing and interesting texture.

Not suitable for complete beginners.



Tuesday 17h July

Zanzibar - Sabine Lippert

Sabine is visiting the Studio this week from Germany and this lovely bracelet got its name from the wooden ornamental windows in the ancient houses from Zanzibar. The unique bezeling of the rivoli is highlighted by rich embellished links and is beautifully adorned with SWAROVSKI ELEMENTS.



Wednesday 18th July

Renaissance - Sabine Lippert

A beautiful Peyote based project with several layers which is a little tricky so would be suitable for beaders with experience. The openings above the round beads are reminiscent of the special shape of Renaissance sleeves. Glistening SWAROVSKI ELEMENTS sparkle along this lovely bracelet.

Suitable for advanced beaders.



Friday 20th July

Fifty Links Necklace - Sabine Lippert

This delicate necklace is made from almost fifty different links! There is a huge variation of little beaded SWAROVSKI ELEMENT treasures, all based on the idea of a loop at each end. All links are attached with jump rings, so the necklace drapes beautifully.

Suitable for intermediate beaders.



Saturday 21st July

Orchid Bracelet - Sabine Lippert

This spectacular bracelet is based on tubular Right Angle Weave and twists and turns along the outside edge to produce this very interesting bracelet festooned with SWAROVSKI ELEMENTS and various sizes of beads and drops. A very interesting project.

Suitable for advanced beaders.



Tuesday 24th July

2.00pm - 4.00pm

Taster Session Celini Spiral - Lucy Andrews £16.00

Have fun mixing different shaped beads whilst mastering your Peyote Stitch to create this interchangeable bangle. Workshop fee includes all materials to make the bangle. Students should have a basic understanding of Peyote Stitch.

Suitable for beaders with some experience.



Thursday 26th July

Filigree of Pearls - Jane Marie Griffin

Create sumptuous pieces of jewellery using these three dimensional 'Filigree of Pearls'. This technique creates a domed pillow effect that is double sided and can be made in several different sizes. As well as learning how to make the filigree pillows you will also look at the design possibilities of items such as bracelets, necklaces and earrings.

Suitable for Intermediate to experienced beaders.



Friday 27th July

2.00 - 4.00pm

Taster Session Rivoli Charm - Lucy Andrews £16.00

If you have always wanted to learn how to bezel around a cabochon, stone or rivoli but thought it was too difficult then this is the session for you. These pretty little charms will give you the confidence to try all sorts of shapes and sizes! Includes all materials and refreshments.

Students must have a basic understanding of Peyote Stitch.



Saturday 28th July

Imperial Pearls - Lynn Firth

Trap a SWAROVSKI ELEMENTS Space Cut crystal in the centre of a sandwich of Right Angle Weave made using Swarovski pearls and embellished with crystals and beads. Learn how to make the bezel so the pendant can hang balanced from a rope or chain of your choice. Students must have a working knowledge of RAW.



Suitable for intermediate and advanced beaders.

Tuesday 31st July

Rivoli Roses - Jean Power

Mix Jean's geometric beading techniques with SWAROVSKI ELEMENTS sparkle for these versatile reversible beaded pendants which can be worn alone or jointed together for bracelets, necklaces and more. Students will need experience with Peyote Stitch and Brick Stitch.



Suitable for advanced beaders.

August 2012

In the Studio for August...

An exhibition and display from our 'Treasure Challenge' entries. Come and see what our members have created with their monthly packs of SWAROVSKI ELEMENTS and be inspired by their ideas and colours. The winners will be announced at our Beady Picnic day on Saturday 4th August.



Wednesday 1st August

Shelley Bracelet & Sherbert Fizz - Carol Kirk

Two designs in one day! This lovely bracelet is made with Miyuki Tila beads, the beads with two holes, and SWAROVSKI ELEMENTS and seed beads. For the second design learn how to make a rope using Miyuki Triangle beads which is embellished as you work (both designs can be seen on line).



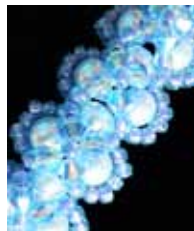
Suitable for all abilities including beginners.

Friday 3rd August

Treasure Trove & Flower Garland - Carol Kirk

Learn how to create these two different feminine bracelets using SWAROVSKI ELEMENTS. Crystals, pearls and Japanese seed beads are beaded together to produce the undulating curves in the Treasure Trove whilst seed beads and accent beads are used for the Flower Garland (both designs can be viewed online).

Suitable for all levels including beginners.



Saturday 4th August

Beady Picnic

Free to All

Bring your picnic, chairs or blanket and join us for our Anniversary Celebrations. There will be demonstrations, special offers, a display of entries from our Treasure Challenge and refreshments. Laura Brocklebank from SWAROVSKI ELEMENTS will be judging our Beading Challenge and announcing the winners from 2011 at 1pm and we will be launching our new challenge for 2012!



Wednesday 8th August

2.00pm - 4.00pm

Taster Session Memory Wire Spiral - Lucy Andrews £16.00

Not sure what to do with Memory Wire? This workshop is great fun, easy and effective! Learn how to create these stylish Memory Wire Bangles and decorate with strands of beads, drops and more. Everything you need to complete the project is included in the Taster fee, including refreshments!

Suitable for all abilities, no experience necessary.



Thursday 9th August

2.00pm - 4.00pm

Taster Session Bobble Berry Bracelet - Lucy Andrews £16.00

Just the thing for the summer. This bobble style bracelet is made by stringing beads, wrapping little berries and twisting to create this effective bracelet in ripe rich berry colours. All materials and refreshments included in the workshop fee.

Suitable for all levels, no experience necessary.



Friday 10th August

Flying Ringlets - Laura Andrews

£60.00

Get a new take on three different stitches while learning to seed bead over small armatures. These chain links are so fast and fun to make you may have a new obsession. An intriguing clasp completes this chain as a bracelet or necklace with ease and elegance. Rings have tons of uses! Some basic knowledge of beading would be helpful.

Suitable for all levels of beaders.



Saturday 11th August

Pave Beads - Laura Andrews

£60.00

Create European style beaded beads using a new stitch. This new stitch very quickly and easily builds self-supporting crystal Pave beaded beads. Add sparkle to bracelets, necklaces, thick chain etc. Warning: beading these sparkling SWAROVSKI ELEMENTS little beaded beads is such fun! Some basic knowledge of beading would be helpful.

Suitable for all levels of beaders.



Monday 13th August

10.00am - 12.30pm

Learn to Bead Flat Herringbone - Elizabeth Selwood £15.00

Learn how to bead using Flat Herringbone stitch which can be used as a base for embellishment, made into cuffs or collars and much more. Master turning and how to increase and decrease.

Suitable for complete beginners.



Tuesday 14th August

2.00pm - 4.00pm

Taster Session Double Spiral - Lucy Andrews

£16.00

Have you mastered Spiral Ropes and would like to try something a little more complicated? Learn how to master a Double Spiral Rope using different sizes of beads. All materials and refreshments included in the workshop fee.

Some beading experience useful but not essential.



Thursday 16th August

2.00pm - 4.00pm

Taster Session Pearl Watchband - Lucy Andrews **£16.00**

Make a delightful beaded watch strap using SWAROVSKI ELEMENTS crystals and pearls. Quick and easy to make, you could have one for every outfit! There will be an additional cost for the watch face plus a clasp of your choice (individual prices apply). Workshop fee includes SWAROVSKI ELEMENTS, needle, thread and refreshments.

Suitable for all, no experience necessary.



Friday 17th August

2.00pm - 4.00pm

Taster Session Orgalala Butterfly - Lucy Andrews **£16.00**

Using simple netting techniques create a scrunchy textured bracelet or necklace. Great for beginners to learn a new stitch and also for beaders with some experience that would like to develop their netting techniques. All materials supplied for the project and refreshments.

Suitable for all, no experience necessary.



Saturday 18th August

Freya - Sallyann Dunn

Made to celebrate spring, bezelled SWAROVSKI ELEMENTS in various sizes are put together, not necessarily symmetrically, but you can choose to do so if you wish, all hung from a beaded rope. Sallyann will have various beaded rope instructions available for your to choose which one compliments your design. Working knowledge of Peyote Stitch recommended.

Suitable for all levels of beaders.



Wednesday 22nd August

2.00pm - 4.00pm

Taster Session Caterpillar Bracelet - Lucy Andrews **£16.00**

Lots of lush fringing makes this Caterpillar Bracelet (bet you can't guess why they are called that) have lots of texture and movement. A simple technique but with stunning results. All beads, clasp and refreshments included in the workshop fee.

Suitable for all, no experience necessary.



Thursday 23rd August

2.00pm - 4.00pm

Taster Session Dizzy Donuts - Lucy Andrews

£16.00

Use some basic stringing techniques and mix with a little bead needleweaving to create this stunning necklace using a semi precious 'donut'. The branch fringing adds movement and sparkle. NB there will be an additional cost of approximately £4.60 for the stone donut.

Suitable for all, no experience necessary.



Saturday 25th August

Chocolate Dipped Strawberries - Katie Dean

Learn how to make chocolate dipped strawberries using circular and tubular Peyote stitch with basic increases and decreases. Turn your strawberries into pendants, earrings, key rings and more! Once you've learnt the basic technique, play around with size and colouring. Basic familiarity with Peyote stitch is advisable, but not essential.

Suitable for all levels of beaders.



Wednesday 29th August

2.00pm - 4.00pm

Taster Session Daisy Chains - Lucy Andrews

£16.00

These pretty Daisy Chains are easy to make once you know how. Create dainty and delicate bracelets and necklaces for yourself or as a gift. All beads equipment and refreshments are provided.

Suitable for all levels, no experience necessary.



Thursday 30th August

2.00pm - 4.00pm

Taster Session Russian Spirals - Lucy Andrews

£16.00

Learn how to make these lovely Russian Spirals using seed beads, needle and thread. Different combinations of bead will produce stunning and quick results and in this session you will be able to make a bracelet. Some basic beading experience would be useful but not essential. Cost of the workshop includes all materials to make a bracelet and refreshments.

Suitable for beginners.



Friday 31st August

2.00pm - 4.00pm

Taster Session Berry Bracelet

£16.00

These Peanut shaped beads produce some amazing textured bracelets just by using simple beading techniques. Come along to this taster and get to grips with these intriguing little beads. Cost of the workshop includes refreshments and all materials to make the bracelet.



Suitable for all, no experience necessary

September 2012

In the Studio for September...

Kerrie Slade has been beading for 10 years and has had her work published in over 30 books and magazines in Europe and the USA. She now teaches beadwork internationally and sells her patterns directly from her website. Kerrie will be creating an imaginative themed collection especially for our exhibition at the Studio, so be sure not to miss this exciting event!



Saturday 1st September

Catherine Necklace - Pam Palmer

Pearls and square SWAROVSKI ELEMENTS are the main ingredients for this beautiful delicate necklace. Add a spattering of small crystals for more highlights! Students should have a good basic knowledge of Peyote stitch for this project.



Suitable for all level of beaders.

Tuesday 4th September

Lavinia Bracelet - Maggie Meister

£60.00

This bracelet was inspired by Lavinia Fontana who was the most successful woman of the Bolognese painters in her time. It has two versions that will be covered in the instructions. Using circular peyote and brick stitch, you will make components to join together or place on a Right Angle Weave base to complete a version of the bracelet. Students must be proficient in Peyote stitch and Right Angle Weave.



Suitable for intermediate & advanced beaders.

To book a place telephone 01747 830666 or online at www.stitchncraft.co.uk

Wednesday 5th September

Iside Pendant - Maggie Meister

£60.00

Iside (Isis in Italian) is a pendant inspired by the headdress that is found on many of the statues of Isis found in Pompeii and Southern Italy. Components are made with Peyote Stitch and then combined with Right Angle Weave to create this pendant. Students must be proficient in Peyote Stitch and know the base row for Right Angle Weave.

Suitable for intermediate and advanced beaders.



Friday 7th September

Lavinia Bracelet - Maggie Meister

£60.00

This bracelet was inspired by Lavinia Fontana who was the most successful woman of the Bolognese painters in her time. It has two versions that will be covered in the instructions. Using circular peyote and brick stitch, you will make components to join together or place on a Right Angle Weave base to complete a version of the bracelet. Students must be proficient in Peyote stitch and Right Angle Weave.

Suitable for intermediate & advanced beaders.



Saturday 8th September

La Lanterna Earrings or Pendant - Maggie Meister

£60.00

Fabulous artwork and inspiration can be found in old churches. Maggie was at the V & A Museum in London and saw this wonderful silver lantern from a church which inspired La Lanterna Earrings. These are made using circular and Tubular Peyote, Circular Brick, RAW and embellished with a version of daisy chain.

Suitable for intermediate and advanced students.



Monday 10th September

10.00am - 12.30pm

Learn to Bead Square Stitch - Elizabeth Selwood

£15.00

Square stitch is an extremely strong beading stitch as there are multiple passes through the beads. The stitch can be used for earrings, bracelets, necklaces, etc. and cross stitch patterns and graphs can also be used for designs for amulet bags and wall hangings.

Suitable for complete beginners.



Wednesday 12th September

Embeadery - Heather Kingsley-Heath

Working from simple base shapes learn to build a richly textured surface and elements that can be linked to create bangles, pendants and necklaces. This workshop is all about colour and there will be lots of inspiration. Heather shows you how to construct pieces with hidden brooch pins, clasps and metal loops, ideal for connecting your colourful elements together.

Suitable for beginners, intermediate and advanced beaders.



Saturday 15th September

Cleopatra Spiral Bracelet - Gary Taylor

Scrolls and more scrolls! Let Gary show you how to make this pretty little bracelet combining jump rings and wire coiled scrolls. This delicate bracelet is based on a design from the time of the Pharaohs. A charge of approximately £5.00 will be payable to the tutor on the day to cover the rings and wires used on the workshop.

Suitable for beginners.



Thursday 20th September

10.00am - 12.30pm

Learn to Crochet Curly Wurly Bracelet - Julia Hall

This fun curly crochet technique is fantastic for making bangles, necklaces or scarves. It grows quickly and is easy to master. The Curly Wurly bracelet can be embellished with SWAROVSKI ELEMENTS or beads once completed. Great fun to do and wear.

Suitable for complete beginners.



Friday 21st September

Annabel Necklace - Annette Bolton

Explore different size layered beaded flower shapes, which are worked in size 15 beads and SWAROVSKI ELEMENTS to make a delicate and dainty neckpiece. Individual flowers also work well on their own on a bracelet of double St. Petersburg chain.

Suitable for beginners, intermediate and advanced beaders.



To book a place telephone 01747 830666 or online at www.stitchncraft.co.uk

Saturday 22nd September

Angles for Dangles - Lynn Firth

Create angles in Right Angle Weave, in a continuous piece of beadwork that can be made into a necklace in its own right, or used as angles to dangle charms or beautiful SWAROVSKI ELEMENTS from! This class is not suitable for beginners and a basic working knowledge of RAW is needed to get the most from this class.



Suitable for intermediate and advanced beaders.

Saturday 29th September

Tangerine Dream - Sian Nolan

Using lustrous SWAROVSKI ELEMENTS, this stunning necklace is created with RAW circular components which are then interwoven with silver rings and a huge Swarovski Miss-U Heart. The neck strap is embellished with twinkling Roses Montees. For a more understated look, you could reduce the number of components or leave off the heart.



Suitable for intermediate and advanced beaders.

October 2012

In the Studio for October...

Jennifer Airs is a self taught beadworker and finds her maths background influences her designs. She is passionate about colour, texture, shape and uses all of these in her work. To date over 100 of her designs have been published in books, on DVD, in magazines and on Bead TV. Jennifer loves meeting other beaders and almost prefers chatting about beads to beading.



Monday 1st October

10am - 12.30pm

Learn to Bead Brick Stitch - Elizabeth Selwood £15.00

Brick Stitch is such a wonderfully versatile stitch allowing you to create petal shapes, flowers and more, as well as being fantastic for bracelets and necklaces. It is called Brick Stitch because when you look at it, it resembles the staggered pattern you see in brick walls.



Suitable for complete beginners.

Tuesday 2nd & Wednesday 3rd October

Masterclass Nefertiti's Treasure - Melanie de Miguel £60.00

Nefertiti's Treasure draws together influences from Celtic and Byzantine styles and those beautiful intricate latticed walls in Mosques; the Celtic Cross style of embellishment on the Cosmic Ring, the latticework in the rope and the overall opulence of the whole piece says Byzantine. However you'll find that trying out your own colour choices can bring a whole new style to this design.

Suitable for intermediate/advanced beaders



Saturday 6th October

Chrissy Bracelet - Sallyann Dunn

This delicate bracelet has a lovely feel and drape to it. It is beaded with Japanese seed beads and SWAROVSKI ELEMENTS to give a little bit of sparkle.

Suitable for beginner, intermediate and advanced beaders.



Wednesday 10th October

Shades of Victoriana - Elizabeth Selwood

Create a lovely and very wearable Victorian style necklet with a modern twist by beading around a beautiful Swarovski oval fancy stone, and using pearls and bicones, but combining them asymmetrically. The result is simple and yet eye catching and could be worn on any occasion.

Not suitable for beginners.



Saturday 13th October

Half Persian Chain Maille - Gary Taylor

An intricate Chain Maille weave with endless possibilities which is ideal for encapsulating cabochons and beads. Thought of as one of the more advanced weaves in the Chain Maille family Gary will show you how to create this stunning weave and its possibilities.

Suitable for intermediate levels.



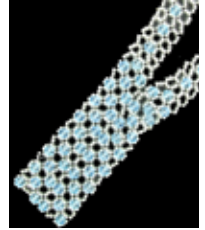
Monday 15th October

10.00am - 12.30pm

Learn to Bead Right Angle Weave - Elizabeth Selwood £15.00

Right Angle Weave, also known as RAW, is a beading stitch with an addictive rhythm and once mastered, this stitch opens up a whole new range of beading opportunities.

Suitable for complete beginners.



Thursday 18th October

Fereeform Designer Bag - Julia Hall

Learn the techniques to create this stunning knitted and crocheted bag that you will not find in the high street shops. Use hand dyed Noro knitting yarn with basic stitch techniques to create a truly 'one of a kind' design.

You will need basic knitting & crocheting skills for this class including how to cast on and off.



Saturday 20th October

Huckleberry Buckle - Heather Kingsley-Heath

This is a bracelet you just won't want to take off from the minute you have finished beading it. Make a single or multi wrap ribbon of deliciously patterned Peyote Stitch, then thread on a gorgeously embellished beaded buckle or two. Continuing Heathers 'explore colour' themed projects for us this year, this workshop will include some detailed colour inspiration for you to feast on.

Suitable for intermediate and advanced beadrs.



Thursday 25th October

Russian Swirls - Pam Palmer

St Petersburg Chain adapted for use with Miyuki Tila Beads form the swirls for the centre of the necklace. The traditional form of the stitch is used for the rest of the necklace. Some beading experience is needed but the stitch will be taught in full.

Suitable for beadrs with some experience.



Saturday 27th October

Fearless Fimo Focals & Cabochons - Kerrie Venner

Beautiful and complex designs can be achieved using simple cane construction methods. You will build a Millefiori cane in the morning and in the afternoon create classic raised cabochon shapes, and a range of co-ordinating accessory beads. Attendees would benefit from some previous experience of handling polymer clay.

Suitable for all levels of ability including beginner.



Wednesday 31st October & Thursday 1st November

Crystal Stars Necklace - Jean Power

£60.00

Learn how to make this lovely newly designed original necklace featuring Jean's Geometric Stars and SWAROVSKI ELEMENTS and a bead component necklace complete with beaded clasp and, the beauty of this design is that the star is reversible!

Suitable for advanced beaders.



November 2012

In the Studio for November...

Moira Brown is a largely self-taught beader, inspired by the colours and textures of the Middle East, Asia and South America, all continents that have been 'home'. She takes inspiration from the beauty of artisan work, and is guided by exuberant creativity. Shape, texture and colour are borrowed from the vernacular and translated into the English context.



Saturday 3rd November

More Beaded Crochet - Gillian Lamb

For all those who want to try out bead crochet using alternative beads, SWAROVSKI ELEMENTS, crystals and pearls or learn how to make crochet loops and bumps. However, if you have never tried the basic technique of bead crochet you are also welcome to come along to this class.

Suitable for all abilities.



To book a place telephone 01747 830666 or online at www.stitchncraft.co.uk

Wednesday 7th November

Beaded Baubles - Lynn Firth

Learn how to create these magical Beaded Baubles and decorate your festive tree or give for a special gift such as an anniversary, birthday or new baby. These beautiful designs are timeless and would look equally beautiful on a Christmas tree or metal stand. 2012 design will be different from that shown. Students should have some experience of beadwork.

Suitable for beginner, intermediate and advanced beaders.



Saturday 10th November

Lacey Elements - Sylvia Fairhurst

This workshop will cover how to create small lacy elements, when the single element is mastered a second layer can then be added. At the end of the day students will have several lacy elements of single and double layers which can then be made into a bracelet or other item of their choice.

Suitable for beginners, intermediate and advanced beaders.



Thursday 15th November

10.00am - 12.30pm

Learn to Knit Cable Stitch - Julia Hall

£15.00

Cable techniques can add exciting texture to knitted garments and accessories. Julia will teach you some of the various cable stitches whilst knitting an interesting bracelet. This bracelet is a great way to practice cable knitting and will give you the confidence to try it on something bigger such as a garment. Not suitable for complete beginners.

Suitable for students with some knitting experience.



Saturday 17th November

Beaded Baubles - Lynn Firth

Learn how to create these magical Beaded Baubles and decorate your festive tree or give for a special gift such as an anniversary, birthday or new baby. These beautiful designs are timeless and would look equally beautiful on a Christmas tree or metal stand. 2012 design will be different from that shown. Students should have some experience of beadwork.

Suitable for beginner, intermediate and advanced beaders.



Thursday 22nd November

Beaded Angel - Elizabeth Selwood

This little angel is just over 6cm high and is designed as a Christmas tree decoration. Techniques include advanced herringbone and right angle weave. Once you have mastered the techniques you could make a choir of angels to coordinate with your tree in a single colour such as white, cream or gold or select rich Renaissance colours.

Suitable for intermediate and advanced beaders.



Saturday 24th November

Nouveau Watch - Gary Taylor

Straight out of the roaring twenties, with twirls, glittering SWAROVSKI ELEMENTS and a pretty watch face, what better way to tell the time. Let Gary show you how to make this piece bespoke just for you or why not make it for a present for someone special?

Suitable for all levels including beginners.



Wednesday 28th November

Cleopatra Bracelet - Annette Bolton

Annette has used beautiful square SWAROVSKI ELEMENTS, embellished them and then caught them between beaded squares. Matching beaded toggle and clasp completes this lovely elegant design.

Suitable for intermediate and advanced beaders.



Friday 30th November

Ice Queen - Elizabeth Selwood

The netting in this deceptively simple necklace has been shaped so that it naturally falls into an oval shape around the neck. Use pretty flowers to embellish and Swarovski bicones to provide a subtle sparkle.

Suitable for beginner, intermediate and advanced beaders.



December 2012

In the Studio for December...

For the month of December we have the talented 'Thursday Beaders', a group of beaders based in Wiltshire who meet on a regular basis to share their love of beadwork, many of the members are regular visitors to the Studio.



Saturday 1st December

Pink Passion - Pam Palmer

A Right Angle Weave (RAW) variation base is embellished with two sizes of SWAROVSKI ELEMENTS and cylinder beads. Previous knowledge of basic RAW required to get far enough in the workshop to be able to complete the project at home.

Suitable for intermediate and advanced beaders.



Saturday 8th December

Encapsulated Beads with Chain Maille - Gary Taylor

Encapsulated crystal necklace is an eye catching design easily mastered. Incorporating all the glamour of SWAROVSKI ELEMENTS and hold them in place with a modern chain maille technique. There will be a small charge to Gary for the hand made jump rings for this project which will not exceed £5.00.

Suitable for beginner, intermediate and advanced levels.



Monday 10th December

10am - 12.30pm

Learn to Bead St Petersburg Chain - Elizabeth Selwood £15.00

St Petersburg stitch produces a lovely delicate beaded chain with lots of movement. The outside edge can be made in beads but you can also add little drops or crystals to produce a different technique.

Suitable for complete beginners.



Beading Groups

Beading groups are welcome to the Studio to spend a day beading and enjoying our facilities, at no charge, with light lunch provided for a small fee if required. You will have use of the workshop area, which can accommodate twelve visitors seated, or just use the visit as a shopping expedition to top up your bead stash and inspire you for future projects. We are also able to schedule a private workshop for you with Lucy or Lynn for a fee to be arranged at time of booking.

Visits are subject to availability of the facilities so will need to be arranged in advance by telephoning Lucy on 01747 830666 to discuss your requirements.



Tutor Profiles

Laura Andrews

Laura has been beading since she was a child. Training in art, colour, theatrical costuming, and various other disciplines, have led Laura to teaching the art of beadwork. Laura is eager to share her love and knowledge with us at the Studio when she joins us to teach from the USA.



Lucy Andrews

Lucy has always been interested in crafts and since joining the Stitchncraft team has gained lots of knowledge of beading techniques and colour combinations. Lucy teaches regularly at the Studio and is always on hand to help customers and students with their beady problems.



Annette Bolton

Annette has 18 years teaching experience in beadwork, textiles, mixed media and design. She regularly teaches residential weekend courses as well as day classes. Annette has also taught at the Great British Bead Show.



Katie Dean

Katie has been beading since 2003. She began with French Beading and moved on to learn all the major off-loom weaving techniques. Katie has had designs in various magazines and her first book – 'Let's Celebrate! Miniature Beaded Cakes for all Occasions' was published last year.



Sallyann Dunn

Sallyann has a City and Guilds Certificate in Embroidery, Bead Needle Weaving and an Adult Teaching Certificate. She has been teaching beading for approximately 9 years and loves all beading.



Julia Hall

Julia is an avid knitter, crocheter and beader with a wealth of experience across a broad spectrum of techniques. Julia has a real enthusiasm for sharing her skills and knowledge with others. She can also be found working in the Stitchncraft Studio on a regular basis.



Sylvia Fairhurst

Sylvia has tried every type of craft since childhood but bored easily with them until she discovered beads! The rest, as they say, is history! Sylvia is currently Chairman of The Beadworkers Guild whilst also teaching regular classes and running her own bead business.



Lynn Jones

Lynn has been teaching beading for the past seven years in Deal, Kent. She tries to aim for a relaxed informal class where she can share her love and knowledge of beading to like minded people.



Lynn Firth

Lynn has been in the embroidery and bead trade for over 20 years. She has taught at the Great British Bead Show and in Japan for the Japanese Bead Society as well as at the Studio and to groups. She is also a director of Stitch 'n' Craft.



Heather Kingsley-Heath

Heather is a well known author of beading books including her new Albion Stitch books one and two. She is also a popular tutor in the beading world, travelling to teach groups both here in the UK and overseas.



Jane Marie Griffin

Jane Marie has taught City & Guilds Embroidery, Machine Embroidery and Bead Weaving for over 11 years and she is currently Shows Co-ordinator for the Beadworkers Guild.



Carol Kirk

Carol is a self taught beadweaver, and has been beading for 14 years, she now has her City and Guilds Certificate for level 2 Beadweaving and a City and Guilds teaching certificate. She teaches her own designs locally in Milton Keynes where she lives.



Gillian Lamb

Gillian regularly teaches beadwork in the UK and in 2006 taught at the first Kobe Bead Art Show in Japan. She is a founder member of the Beadworkers Guild and has also taught at the Great British Bead Show, Daventry.



Jane Matthews

Jane's addiction to beads began more than 13 years ago making her first piece which was a brick stitch amulet. Since then she has gone on to create and teach her own designs at workshops in the north of England and on cruise liners.



Sabine Lippert

Sabine is a new tutor with us this year and will be visiting us from Germany. She has been teaching for over four years and is also a Swarovski Ambassador. She has had her work published in magazines and her first book was printed in 2009.



Chloe Menage

Chloe has a passion for beads and particularly loves the magic of capturing sparkly stones with tiny beads. She is an experienced tutor and is currently editor of Bead magazine.



Laura McCabe

Laura is primarily a self taught beadweaver visiting us from the USA. She exhibits her work in national and international beadwork exhibitions and teaches throughout the USA and the world. Laura is also author of *Creating Crystal Jewellery* with Swarovski.



Maggie Meister

Maggie is a beadwork artist from the USA who is inspired by jewellery, mosaics, and frescoes. She translates her passion for ancient history into jewelry made using seedbeads and semi-precious stones. Her book, *Classical Elegance*, was published in August 2011.



Angela Massey

Angela has been making beautifully detailed bead embroidery pieces for private commissions and galleries for the last ten years. Her work is in many private collections and in the last 18 months she has started to share her knowledge believing that everyone can bead embroider.



Melanie de Miguel

Melanie has been beading since the age of 10. Ever experimenting and seeking to merge her two passions, beadwork and science, Melanie's designs began to take on a more organic approach. Mel teaches classes where she lives and has also taught for GBBS at Daventry.



Sian Nolan

Sian has been beading for about 10 years and has had work published in various magazines. She has taught workshops in her local area and recently in Germany. Sian is a member and volunteer for the Beadworkers Guild.



Elizabeth Selwood

Elizabeth started her teaching career in 1966. In September 2003 Elizabeth became an obsessive beader and has now produced well over 1,000 items of beadwork. She is a member of the Beadworkers Guild, Batty Beaders and North Dorset Embroiderers Guild.



Pam Palmer

Pam enjoys exploring stitch variations, often using a colour palette from nature or fabric. Running the Wessex Beading Group allows her to indulge her love of teaching and she has also taught for the Beadworkers Guild in London and at the Great British Bead Show.



Gary Taylor

Gary has an engineering background but for many years now he has been designing and making his own beads and jewellery which he sells. He is constantly exploring and designing with new techniques including Chain Maille and recently Art Clay Silver.



Huib Petersen

Huib is visiting us from the USA and has been working full time as a bead artist and teacher since 1998, and is still challenged and inspired by the possibilities of this medium. Huib uses beads and a variety of stitches to create sculpted bugs, butterflies, birds, flowers and sea creatures.



Kerrie Venner

Kerrie has been tinkering with polymer clay for four years and also dabbles in fine silver, beading, polymer, paper crafts, fibre crafts and mixed media. Her passion is fine silver and polymer clay and figuring how to fit them all together in design.



Jean Power

Jean Power is an award-winning jewellery designer and author of three jewellery books. She loves working in mixed media but always returns to her main love of beads.



GIFT VOUCHERS

£5, £10, £20 & £25

Why not treat a friend to a Stitchncraft Beads Gift Voucher to celebrate their Birthday or Special Occasion.

Available online or telephone 01747 830666

Vouchers are valid for one year from date of issue